

Shelter, Inc.

2011 Walking Together for Change

**Domestic Violence
Awareness Walk**

October 15, 2011

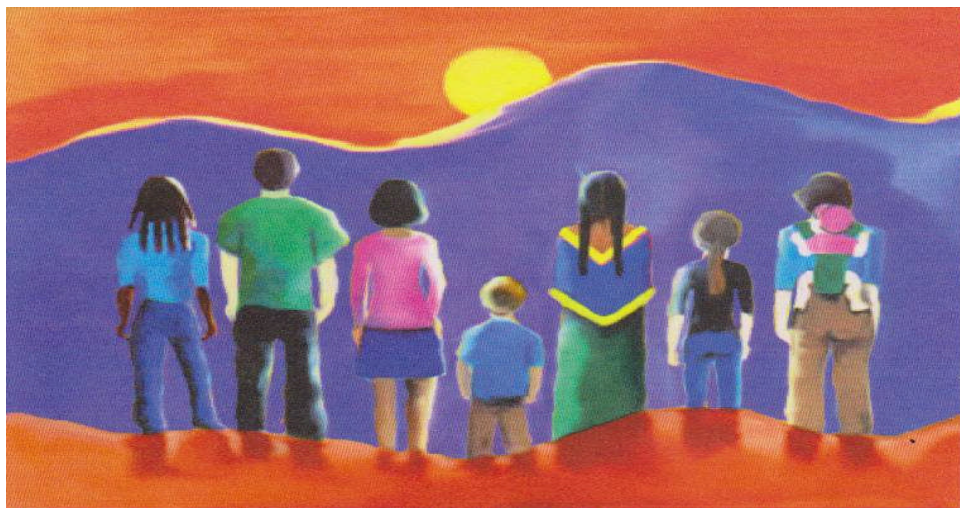
**Knaebe's Apple Farm
in Rogers City
Presque Isle County**

Registration at 9:00

Walk Starts at 10:00

Registration is free, but
donations gladly accepted.

Register online and receive
a free t-shirt.



October is National Domestic Violence Awareness Month

*Walking together, men and women can change attitudes
and perceptions about domestic violence.*

Participate in one or more of
our Awareness Walks!

October 01-Iosco County
October 01-Montmorency County
October 08-Alpena County
October 15-Presque Isle County
October 22-Alcona County

- 5 walks - 5K - 5 counties
- Online registration at shelterincalpena.org
- Registration is free, but donations gladly accepted



Shelter, Inc.

Serving Alcona, Alpena, Iosco,
Montmorency and Presque Isle Counties

Crisis Phone: 1-800-396-9129

For more Awareness Walk information
call (989) 356-2560 or
contactus@shelterincalpena.org

Domestic violence is an epidemic affecting individuals in every community, regardless of age, economic status, race, religion, nationality or educational background. Domestic violence results in physical injury, psychological trauma, and sometimes death. The consequences can cross generations and truly last a lifetime. Let's stop blaming the victim. It's time to address the effects of domestic violence in our communities, and **WALK TOGETHER FOR CHANGE!**